



**international
battery®**

Bulk Energy Storage Systems **BESS**

Megawatt energy storage solution supports:

- *Peak Shaving
- *Infrastructure Upgrade Deferral
- *Time Shifting & Energy Arbitrage
- *Wind Ramping /Smoothing
- *Renewable resource integration
- *T&D support
- *Load following & dispatch
- *Grid Regulation
- *Spinning Reserve
- *Back-up power

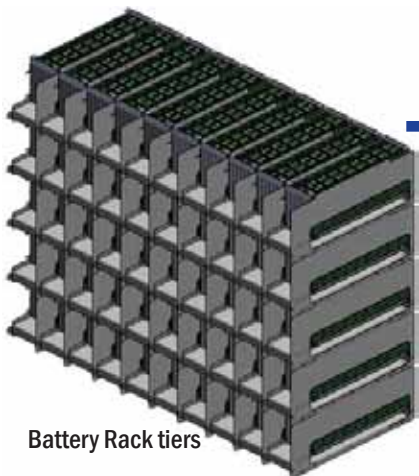


International Battery configures 500kWh to 10MWh energy storage to connect to generators, electric grids, or alternative energy sources. Next generation, clean and green system features HyperClass™ high energy prismatic rechargeable Lithium-ion batteries well suited for a wide range of energy storage applications, paired with the appropriate inverter & PCS. The system uses advanced large format Lithium ion cells that provides an excellent combination of peak power and operating time.

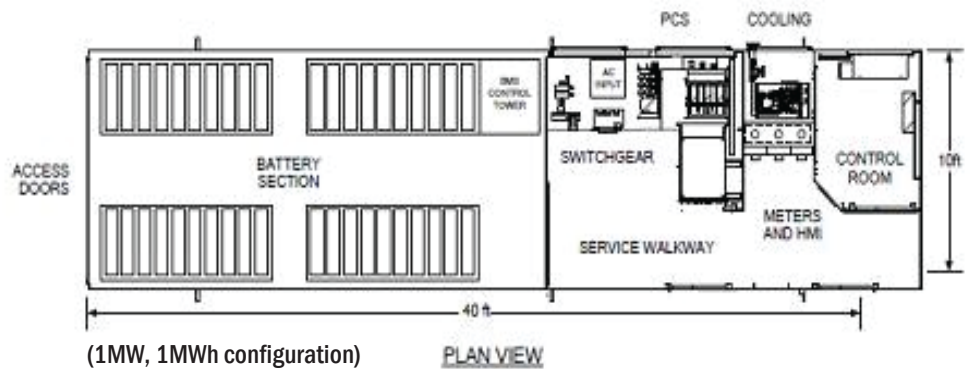
System includes:	<p>Lithium Iron Phosphate battery cells series & parallel wired, rack mounted Battery Management System developed by International Battery Thermal Management Power Conversion System (PCS) and Bidirectional Inverter Master control station for system monitoring, control, & utility interface Intrinsically safe enclosure Fire Suppression and Safety Interlock systems</p>
Performance features:	<p>AC/AC Round trip Efficiency >80% (dependent on Inverter and PCS selection) DC/DC(energy storage) Round trip Efficiency >95% No/Low Maintenance Remote monitoring at the individual cell level High Energy Density Small Footprint Wide operating temperature range High Reliability Long Life Maximum Safety / High level of abuse tolerance</p>
Configurations:	<p>500kWh & 1MWh Energy Building Blocks, easily configurable for multiple power applications 500kW, 1MW, 1.5MW, 2MW Power options Customized design and application support</p>
Options:	<p>Remote Monitoring / SCADA Outdoor enclosure aesthetic variations, shape and color Mobile Containerized System Transformer integration</p>
	SOP005.SS12 rev.#3 ©2011

BESS System Specifications

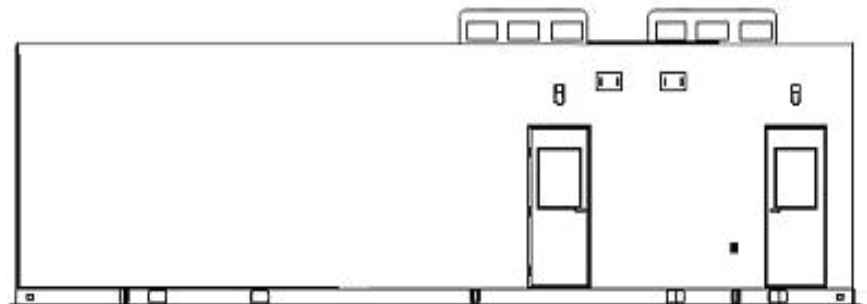
Enclosure	non conductive metal	Switch gear	600VAC/grid, 1500VDC battery
Battery Racking	Modular/Constrained	Bus	C1100 ETP where suitable
Charge time	2.5 hours	Rating	UL94 V0 case & enclosure
Isolation	MV breaker	Life Expectancy	10 years / with periodic maintenance
Output Power	AC output 480VAC		



Battery Rack tiers



LEFT VIEW



FRONT ELEVATION



**international
battery®**

QUALITY MANAGEMENT SYSTEM
CERTIFIED BY DNV
ISO 9001:2008



Transport
Certified



Made In USA

(610) 366-3925 • sales@internationalbattery.com • www.internationalbattery.com
Allentown, PA 18106-9353

© 2011 International Battery, Inc. All rights reserved. All trademarks and registered trademarks are properties of their respective owners.